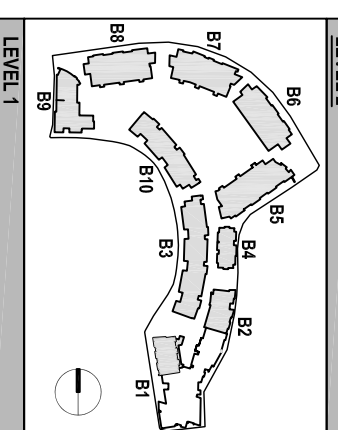
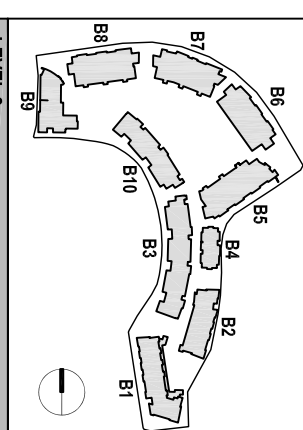
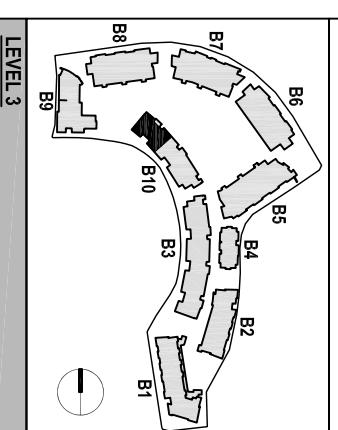
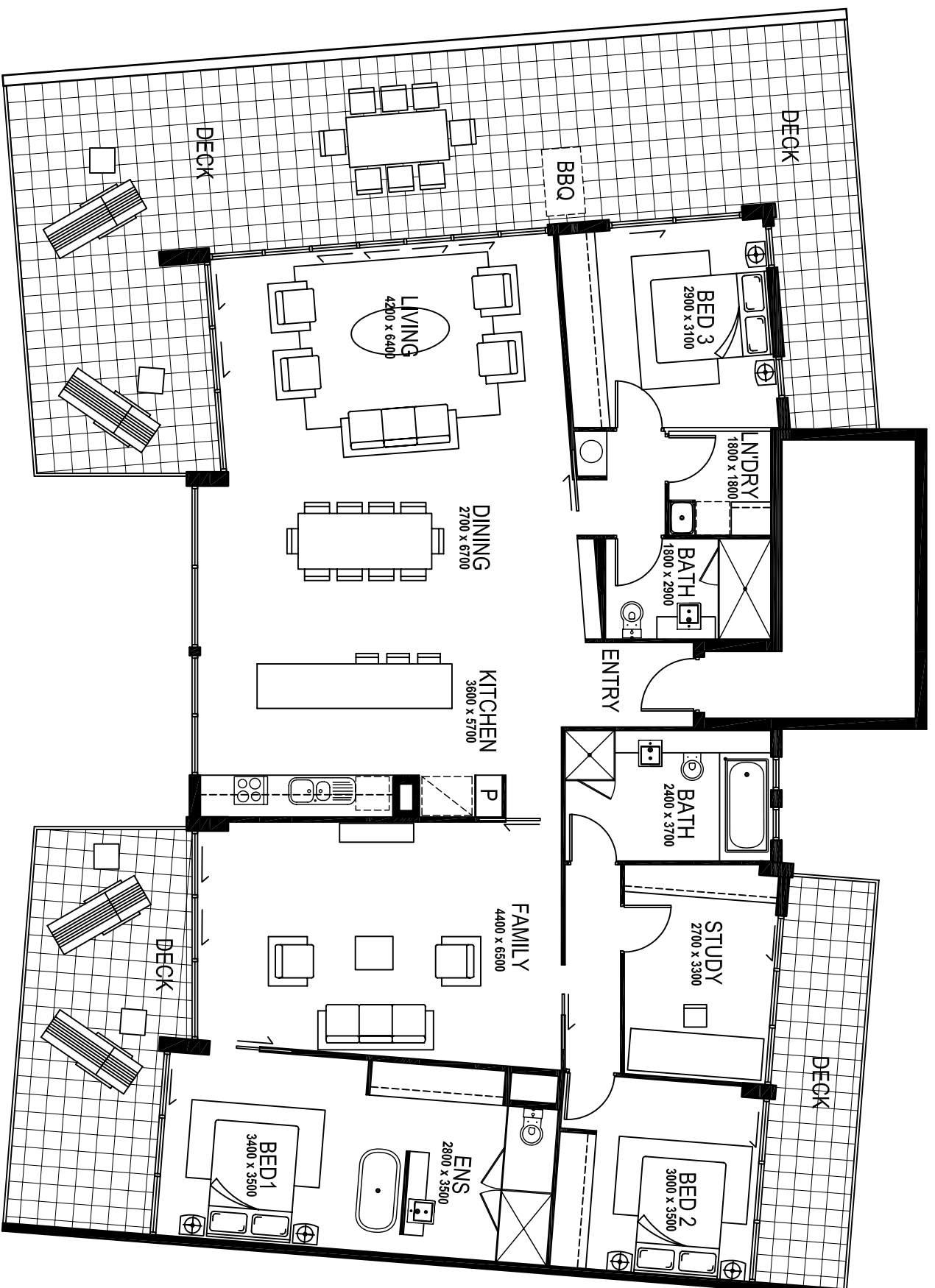


APARTMENT TYPE:	P4
INTERNAL:	191.0 sqm
BALCONY:	107.0 sqm
Total	298.0 sqm

LOCATION:	
Building	1 2 3 4 5 6 7 8 9 10
Level	1 2 3
Apartment	1 2 3 4 5 6 7 8

UNITS:
1031



ALL ROOM DIMENSIONS ARE APPROXIMATE ONLY.

Plan area + layout can vary within apartment types. apartment areas are calculated to mid point of shared walls. Includes external walls. Whilst a reasonable care has been taken in the presentation of this floor plan, it is illustrative only. The layout, dimensions and areas are approximate only and not to be relied upon. Neither Gordon Property Developments nor its agents shall be liable to you should there be any changes between this floor plan and the actual unit as constructed.

Marina View
3 + 1 Bed Penthouse